

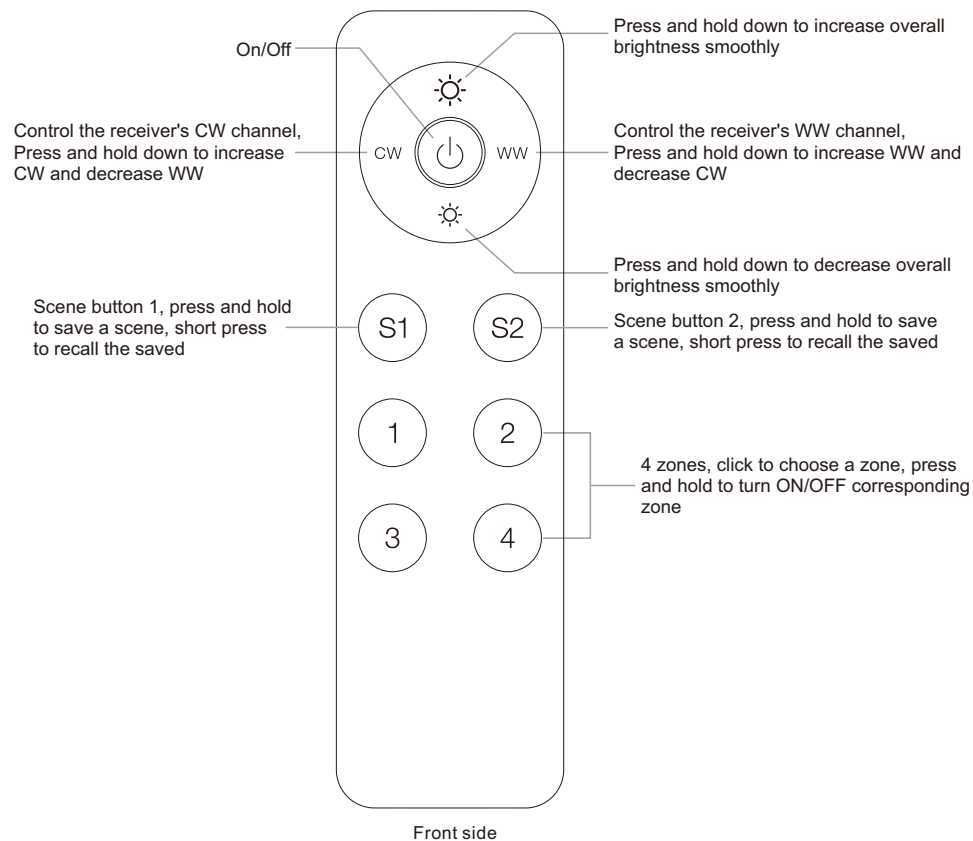
# RF+Bluetooth CCT Remote Control

70010146

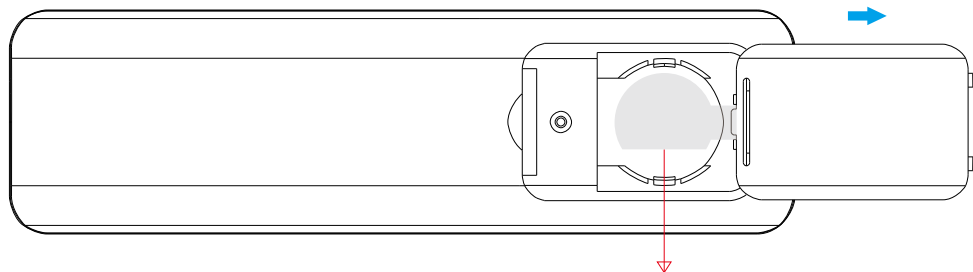


**Important:** Read All Instructions Prior to Installation

## Function introduction



Front side



**Note:** Before the first use, please remove the protective film on the battery.

Back side

## Product Data

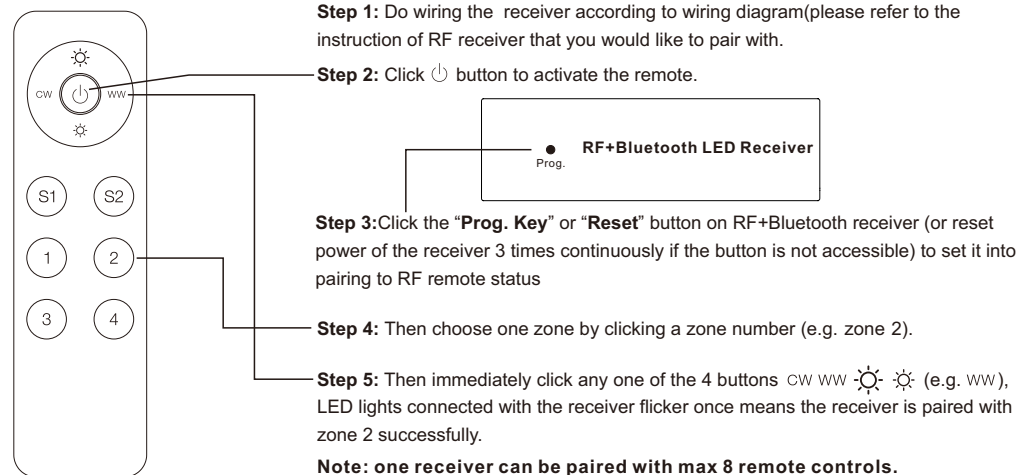
Protocol	RF+Bluetooth Mesh
Operation Voltage	3VDC (CR2032)
Transmission Frequency	2.4GHz
Transmission Range (free field)	30m
Protection Type	IP20
Dimming Range	0.1%-100%
Dimension	150x38.6x12mm
Protection Grade	IP20

- RF+Bluetooth CCT Remote Control
- Tunable white remote control to control 4 zones of receivers and 2 scenes
- Easy & quick pairing to the RF+Bluetooth receivers by simply pushing the buttons
- Mesh network for further control distance, receivers can transmit signal to each other
- Each remote can control numerous receivers
- Each receiver can be paired to max. 8 remote controls
- The controlled receiver status can be quickly synchronized to the smart APP
- Transmission range between every two neighbor devices up to 30m
- Bluetooth low power consumption technology, long battery life

## Safety & Warnings

- This device contains a button lithium battery that shall be stored and disposed properly.
- DO NOT expose the device to moisture.

## Pair with RF+Bluetooth receiver



**If you use multiple receivers, you have two choices:**

Option 1: have all the receivers in the same zone, like zone 1



Option 2: have each receiver in a different zone, like zone 1, 2, 3 or 4

