

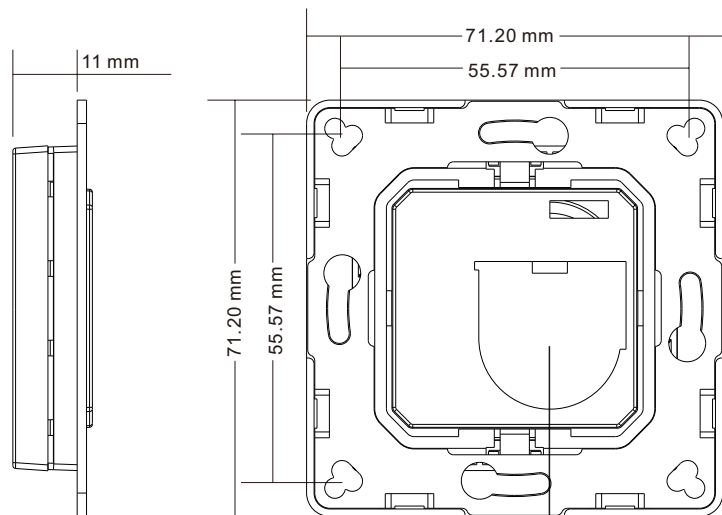
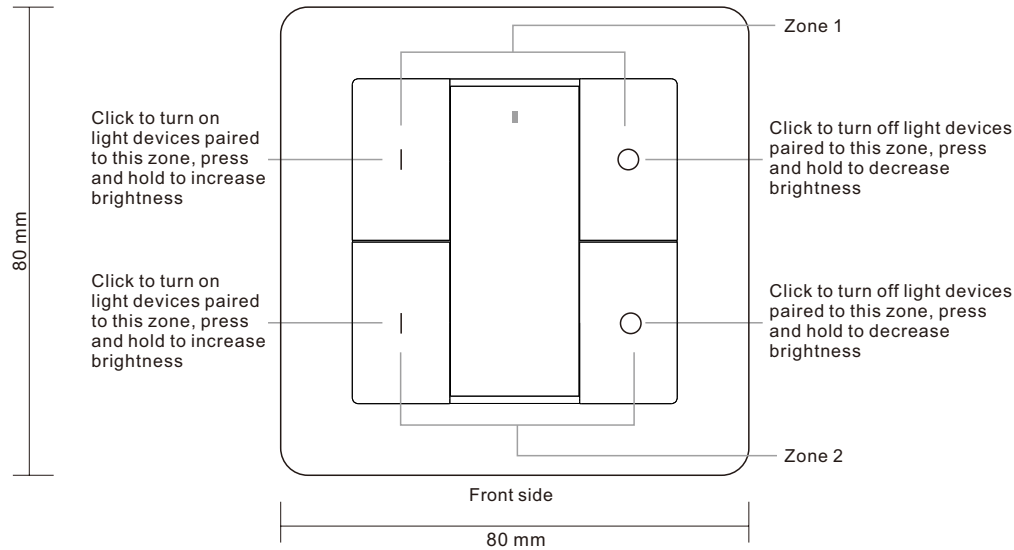
# RF+Bluetooth Wall Mounted Remote Controller

70200015



**Important:** Read All Instructions Prior to Installation

## Function introduction



Battery: CR2450  
Before the first use, please open the battery cover and remove the protective film

Back side

## Product Data

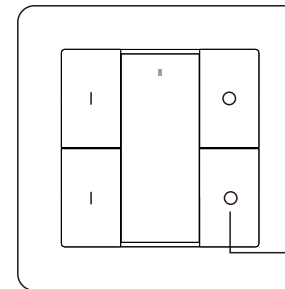
Output	RF+Bluetooth
Operation Frequency	2.4GHz
Power Supply	3V(1xCR2450 battery)
Operating temperature	0-40°C
Relative humidity	8% to 80%
Dimensions	80x80x13.6mm

- RF+Bluetooth DIM wall mounted remote control
- Enables to control 2 zones of receivers
- Easy & quick pairing to the RF+Bluetooth receivers by simply pushing the buttons
- Enables to control universal single color RF+Bluetooth devices
- Mesh network for further control distance, receivers can transmit signal to each other
- Each remote can control numerous receivers
- Each receiver can be paired to max. 8 remote controls
- The controlled receiver status can be quickly synchronized to the smart APP
- Transmission range between every two neighbor devices up to 30m
- Bluetooth low power consumption technology, long battery life

## Safety & Warnings

- This device contains a button lithium battery that shall be stored and disposed properly.
- DO NOT expose the device to moisture.

## Pair with RF+Bluetooth receiver



**Step 1:** Do wiring the RF+Bluetooth receiver according to wiring diagram (please refer to the instruction of RF+Bluetooth receiver that you would like to pair with).



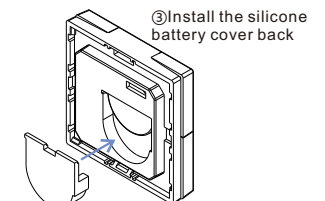
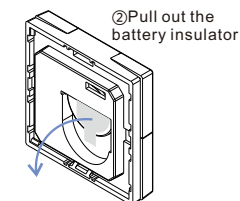
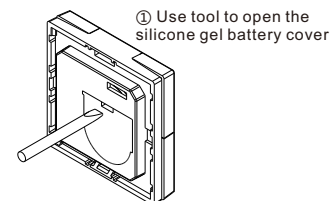
**Step 2:** Click the "Prog. Key" or "Reset" button on RF+Bluetooth receiver (or reset power of the receiver 3 times continuously if the button is not accessible) to set it into pairing to RF remote status

**Step 3:** Click any button of the selected zone (e.g. button ○ of zone 2), LED lights connected with the receiver flicker once means the receiver is paired to the selected zone of the remote successfully.

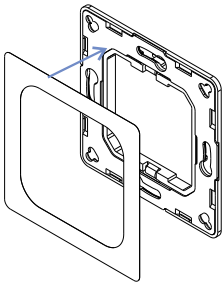
**Note:** one receiver can be paired with max 8 remote controls.

## Installation

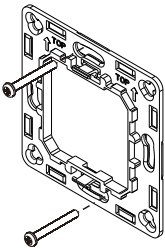
### 1. Remove battery insulator



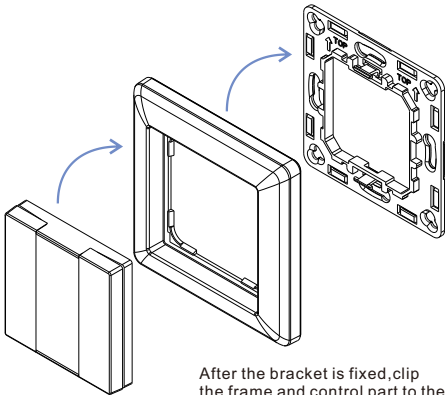
2.Install the controller to wall(2 methods)



**Method 1:**Stick 3M glue on the back of the bracket and then stick the bracket to the wall



**Method 2:**Screw the bracket to the wall



After the bracket is fixed,clip the frame and control part to the bracket in sequence

The key part of this controller is a universal, standard size design switch element that can be integrated in numerous frames by different manufactures as below list:

BEKER	S1, B1, B3, B7 glass
GIRA	Standard55, E2, Event, Esprit
JUNG	A500, Aplus
MERTEN	M-smart, M-Arc, M-Plan